

GROUP MEETINGS

Meetings are held Monthly on the third Thursday of the month from January to November. The Venue is Mill Cottage 65 Sel Peacock drive Henderson at 7.00 pm.

Door Charge \$2.00

We also meet in the West Auckland Research Centre, 2nd floor Waitakere Central Library on the second Tuesday of the month between 10.00 am and 12.00 pm where we can access the microfiche and the Library computers.

By Donation.

We are also available at Mill Cottage on the second Saturday of each month between 11.00 am and 3.00 pm.

By Donation.

FOR FURTHER INFORMATION
PLEASE CONTACT

Gary Snow

Ph 021 618 434

e-mail Waitakere@genealogy.org.nz

John Soppet

Ph 0288 500 4358

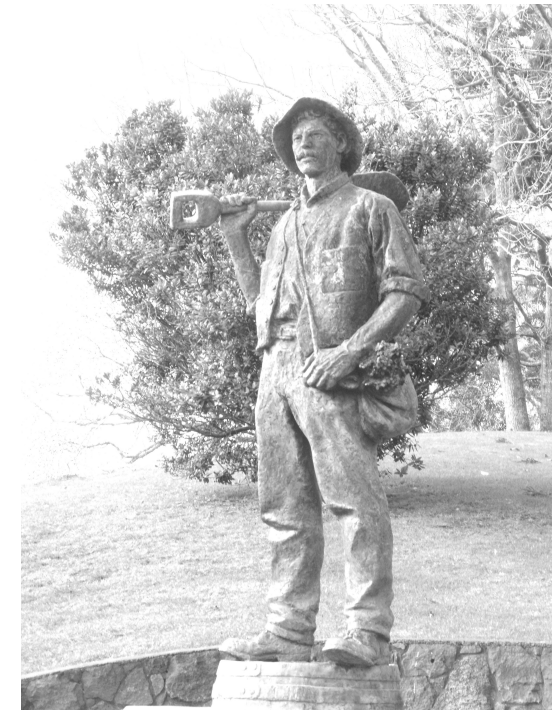
New to Genealogy? Need Help with your Family History?

The Family History Group, previously the Waitakere Branch of the N.Z.S.G, is a gathering of people with a common interest in researching and preserving the history and genealogy of the ancestors who shaped their families future. We meet to discuss and assist each other with problems with research, software or computers. At Mill Cottage we have computers with internet access and scanners for photos and 35mm films. Learn how to access Familysearch the NZBDM and our collection of data CD's.

At the West Auckland Research Centre for our Tuesday Morning meetings we have computers booked for our use. Internet sites like Ancestry, Find My Past and a lot more are available You may also use your own laptop computer for this whilst logged on to the Library wifi network.

GENEALOGISTS and FAMILY HISTORIANS

The Family History Group
of the
West Auckland Historical Society



The Pioneer Winemaker,
Alderman Drive,
Henderson

RESEARCH RESOURCES IN WEST AUCKLAND

West Auckland Research Centre, Level 2 Waitakere Central Library

The Centre has a collection of research material including:

A selection of NZ Society of Genealogist CD-Rom databases including:

- NZ Marriages 1836 to 1956,
- NZ Burial Locator Version 2,
- NZ Society of Genealogists Index Version 5.

A collection of micro fiche and microfilm including.

The New Zealand Herald newspaper on microfilm from 13 November 1863 - current day.

The Western Leader on microfilm from January 1981 - May 1987.

The Local History collection includes archives, manuscripts, maps, memorabilia, ephemera, local newspapers, photographs, research files, oral histories and a large collection of reference books. Also the Appendix to the Journals of the House of Representatives.

The Maori Land Court Minute Books on microfilm containing detailed information about Maori history, land and whakapapa. The database covers the period 1865-1910 and indexes all Minute Books from the Maori land court districts.

The Waitakere Branch NZSG collection of books, indexes, magazines and 18650 microfiche is still held here and is available for everyone to use. This collection can be accessed 7 days a week.

Included in the microfiche holdings are:

- International Genealogical Index. (I.G.I.)
- 1881 Census UK complete.
- N.Z. Births, 1840 to 1990.
- N.Z. Marriages, 1840 to 1990.
- N.Z. Deaths, 1850 to 1990.
- N.Z. Cemetery Transcriptions, 1985 to 2006
- N.Z. Electoral Rolls, 1853 to 1951
- N.Z. Wises Post Offices Directories.
- Maori B.D.M. Births and deaths 1913 to 1960, marriages 1911 to 1951.

Family History Centre Glen Eden Auckland, Church of the Latter Day Saints

FamilySearch offers a network of 4,500 facilities offering public access to genealogical records from all over the world. These range from the world's largest in Salt Lake City to locations in more than 80 countries.

66 Rua Road, Glen Eden,
AUCKLAND
Ph 818-7898

Hours

Wednesday - Friday, 9am-3pm;
Tuesday - Thursday, 7pm-9pm

West Auckland Historical Society

Situated in Mill Cottage the Historical Society has a small library and are the local history experts. Members of this Society have published a number of books and journals on local history and are a fountain of local knowledge.

The Family History Group also operate out of this Cottage.

Mill Cottage,
35 Sel Peacock Drive, Henderson

Open Saturdays 11 am to 3 pm.
Phone (09) 836 5917

The New Zealand Society of Genealogists Inc



Family Research Centre (FRC)
Level 1, 159 Queens Road, Panmure

The Family Research Centre (FRC) is open to everyone seeking assistance with researching their family history.

It accommodates the administrative offices of the Society, the NZSG Library, and is the venue for educational courses.

For more information visit their website @

<https://www.genealogy.org.nz/>